



STOP

DO NOT RETURN TO STORE!



CALL US FIRST!

CUSTOMER HOTLINE
1-800-445-1805
or 1-308-237-2181
FOR QUESTIONS OR
SERVICE INFORMATION

ARRÊT

NE PAS RETOURNER AU MAGASIN!



APPELEZ-NOUS D'ABORD!

ASSISTANCE TELEPHONIQUE
A LA CLIENTELE
1-800-445-1805
ou 1-308-237-2181
POUR L'INFORMATION DE
QUESTIONS OU SERVICE

ALTO

NO LO DEVUELVA A LA TIENDA!



¡PRIMERO LLÁMENOS!

LÍNEA DIRECTA DE ATENCIÓN
AL CLIENTE
1-800-445-1805
o 1-308-237-2181
PARA la INFORMACION de
PREGUNTAS O SERVICIO



CAUTION

IMPORTANT - Please make certain that everyone who uses the Coleman® Powermate® Pressure Washer thoroughly reads and understands these instructions prior to operation.



ATTENTION

IMPORTANT - Veiller à ce que toute personne amenée à utiliser cet appareil de Coleman® Powermate® lise soigneusement ces instructions et les comprenne avant de procéder à son utilisation.



PRECAUCIÓN

IMPORTANTE - Favor de asegurarse de que toda persona que use el Lavador de presión Coleman® Powermate® lea y entienda todas las instrucciones antes de la operación.

TABLE OF CONTENTS

INTRODUCTION	3	Starting the Engine	7
CUSTOMER SERVICE	3	CHEMICAL INJECTION	7
SAFETY	3	CLEANING TECHNIQUES	8
Safety Symbols	3	Application of Soap or Degreaser	8
General Safety Precautions	4	Application of Wax	8
SAFETY FEATURES	5	END OF OPERATION	8
Thermal Relief Valve	5	MAINTENANCE	8
Safety Lock Off Latch	5	Connections	8
Low Oil Shutdown	5	Nozzle	8
Spark Arresting Muffler	5	Water Screen	8
SPECIFICATIONS	5	Engine Maintenance	8
SPRAY NOZZLE SELECTION	5	STORAGE	9
BEFORE OPERATION	6	Pump Storage	9
Pre-Start preparation	6	Engine Storage	9
Hose and Gun Assembly	6	WARRANTY	9
Lubrication	6	TROUBLESHOOTING	10
Fuel	6	PERIODIC MAINTENANCE	11
OPERATING CONNECTIONS	7	ENGINE MAINTENANCE	11
High Pressure Hose	7	ENGINE TROUBLESHOOTING	12
Water Connection	7	ENGINE SPECIFICATIONS	12
OPERATING INSTRUCTIONS	7	CALIFORNIA EMISSION CONTROL WARRANTY	13
Start-up Procedure	7	PARTS LIST AND PARTS DRAWING	38-42

TABLE DES MATIÈRES

INTRODUCTION	14	UTILISATION DE PRODUITS CHIMIQUES	18
SERVICE CLIENTELE	14	TECHNIQUE DE NETTOYAGE	19
SÉCURITÉ	14	Application de Savon ou de Dégraissant	19
Symboles utilisés	14	Application de Cire	19
Précautions Générales de Sécurité	15	APRES UTILISATION	19
MESURES DE SÉCURITÉ	16	ENTRETIEN DE L'APPAREIL	19
Soupape de surpression thermique	16	Raccords	19
Loquet de sécurité	16	Ajutage	19
Arrêt suite au bas niveau d'huile	16	Filtre à eau	19
Silencieux Pare-étincelles	16	Entretien du moteur	19
SPÉCIFICATIONS	16	RANGEMENT	20
CHOIX DE BUSE DE PULVÉRISATION	16	Rangement de la pompe	20
AVANT TOUTE UTILISATION	17	Rangement du moteur	20
Préparation précédant la mise en marche	17	DÉPANNAGE	21
Montage du tuyau et du pistolet	17	GARANTIE LIMITÉE	22
Lubrification du moteur	17	ENTRETIEN PÉRIODIQUE	23
Carburant	17	ENTRETIEN DU MOTEUR	23
RACCORDEMENTS	18	DÉPANNAGE DU MOTEUR	24
Tuyau haute pression	18	CARACTERISTIQUES DU MOTEUR	24
Raccordement d'eau	18	GARANTIE DE CONFORMITÉ AUX RÈGLEMENTS	24
UTILISATION	18	ANTIPOLLUTION DE LA CALIFORNIE	25
Procédure de lancement	18	LISTE DES PIÈCES ET SCHEMA DES PIÈCES	38-42
Mise en marche du moteur	18		

INDICE

INTRODUCTION	26	Encendido del motor	30
SERVICIO PARA LOS CLIENTES	26	INYECCION DE QUIMICOS	30
SEGURIDAD	26	TÉCNICAS DE LIMPIEZA	31
Símbolos de seguridad	26	Aplicación de jabón y desgrasador	31
Precauciones generales de seguridad	27	Aplicación de cera	31
CARACTERÍSTICAS DE SEGURIDAD	28	FIN DE LA APLICACIÓN	31
Válvula de descarga de calor	28	MANTENIMIENTO	31
Dispositivo de seguridad	28	Conexiones	31
Apagado por bajo nivel de aceite	28	Boquilla	31
Silenciador apagachispas	28	Rejilla de agua	31
ESPECIFICACIONES	28	Mantenimiento del motor	31
SELECCIÓN DE BOQUILLA DE PULVERIZACIÓN	28	ALMACENAMIENTO	32
ANTES DE LA OPERACIÓN	29	Almacenamiento de la bomba	32
Preparación inicial	29	Almacenamiento del motor	32
Ensamblado de manguera y pistola	29	RESOLUCION DE PROBLEMAS	33
Lubrificación del motor	29	GARANTIA LIMITADA	34
Combustible	29	MANTENIMIENTO PERIÓDICO	35
CONEXIONES DE OPERACIÓN	30	MANTENIMIENTO DEL MOTOR	35
Manguera de alta presión	30	DETECCION DE FALLOS DEL MOTOR	36
Conexion de agua	30	ESPECIFICACIONES DEL MOTOR	36
INSTRUCCIONES DE OPERACIÓN	30	GARANTÍA DEL CONTROL DE EMISIÓN DE CALIFORNIA	37
Procedimiento de arranque	30	LISTA DE PIEZAS Y DIAGRAMA DE PIEZAS	38-42

Congratulations on purchasing a Coleman® Powermate® Pressure Washer. Whether you are doing light cleaning at home or are needing power to do the tough jobs, Coleman® Powermate® pressure washers are built to give you the power you need. By following proper break-in procedures, using recommended set-up and operating procedures, and performing preventive maintenance as specified in this manual, your Coleman® Powermate® pressure washer will serve you for years to come.

Most important is the safety of you and those around you. Remember that while the Coleman® Powermate® pressure washer gives you the power you need to complete your job, safety rules should always be followed.

Thank you for selecting our product.

Powermate Corporation

CUSTOMER SERVICE

Call our toll free number
1-800-445-1805
8 a.m. to 5 p.m. C.S.T.
or www.powermate.com

to obtain warranty service information or order replacement parts or accessories.

Please have the following information available:

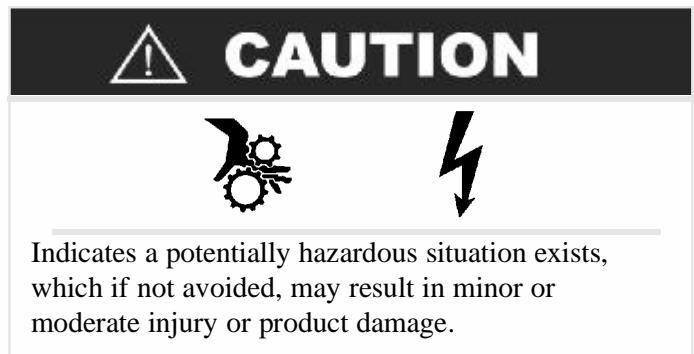
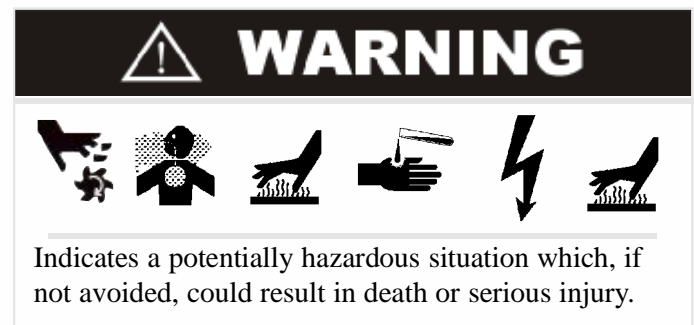
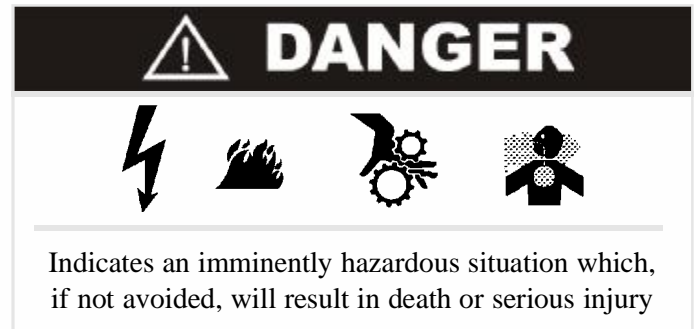
1. Model Number.
2. Serial Number.
3. Date and where purchased.
4. Replacement numbers if you are ordering parts.

Powermate Corporation
4970 Airport Road
P.O. Box 6001
Kearney, NE 68848
Attention: Warranty Service Department

www.powermate.com

Safety Symbols

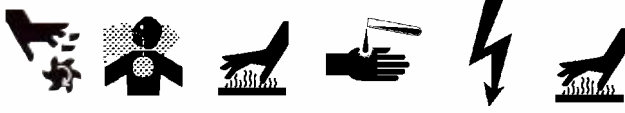
The following symbols are used throughout this manual. Follow listed instructions to ensure your safety.



NOTE: Indicates operation or maintenance information helpful to improve performance or operation.

The following Safety Precautions apply whenever using, storing or servicing Coleman® Powermate® Pressure Washers or their engines to reduce the possibility of personal injury. Overlooking or ignoring these precautions can lead to personal injury or product damage.

WARNING



- Read this manual carefully. Know your equipment. Consider applications, potential hazards and limitations for your unit.
- Know your equipment. Consider the applications, limitations, and the potential hazards specific to your unit.
- Store the Pressure washer in a well ventilated area with the fuel tank empty. Fuel should not be stored near the pressure washer.
- Never operate under these conditions:
 - a. A noticeable change in engine speed.
 - b. A noticeable loss of pressure.
 - c. The engine misfires.
 - d. Smoke or flames are present.
 - e. Enclosed compartment.
 - f. Excessive vibration.
 - g. Rain or inclement weather.
- Water spray must never be directed towards any electric wiring or directly towards the pressure washer.
- Do not allow the hose to come in contact with hot muffler.
- Equipment must be placed on a firm, supporting surface.
- Remove the spark plug or cable from the spark plug to prevent accidental starting, when not in use, or prior to detaching the high pressure hose.
- Keep the pressure washer clean and free of oil, mud and other foreign matter.
- Do not wear loose clothing , jewelry, or anything that may be caught in the engine.
- Never direct spray at people or pets.
- Never allow children to operate pressure washer at any time.
- Use both hands to control the wand.

WARNING



- Do not touch nozzle or water spray while operating.
- Wear safety goggles while operating.
- Only approved hoses and nozzles should be used.
- The trigger gun must not be jammed in position during operation.
- Never tie knots or kink the high pressure hose.
- All hose connections must be properly sealed.
- Prior to starting the pressure washer in cold weather, be sure ice has not formed in any part of the equipment.
- Use only recommended chemicals.
- Outdoors use only.
- Place the pressure washer away from cleaning site during operation.
- To prevent accidental discharge, the spray gun should be secured by locking trigger when not in use.
- Do not run the pressure washer for more than five minutes without depressing the trigger or damage to the pump may result.
- Check the fuel system periodically for leaks or signs of deterioration such as chafed or spongy hose, loose or missing clamps, or damaged tank or cap. All defects should be corrected before operation.
- Do not touch hot muffler.
- Service, operate and refuel under the following conditions.
 - a. Good ventilation.
 - b. Refuel the pressure washer in a well lighted area.
 - c. Avoid fuel spills and never refuel while the pressure washer is running.
 - d. Avoid an ignition source when refueling.
 - e. Use lead free fuel with a minimum of 85 octane.
- Do not smoke near the pressure washer.
- Do not use damaged high-pressure hoses.

SAFETY FEATURES

THERMAL RELIEF VALVE

A thermal relief valve is provided to protect the pump from overheating if the spray gun is closed for an extended length of time or the nozzle becomes plugged. However, it is intended to be used as a backup system and every effort should be made to not permit the pump to heat up.

We recommend turning the pressure washer off if it will not be used for more than five minutes. This saves wear on the unit, reduces fuel consumption and extends the life of the pump by avoiding heat.

SAFETY LOCK OFF LATCH

To prevent accidental discharge of high pressure water, the safety latch on the trigger should be engaged whenever the pressure washer is not in use. (Refer to Operating Instructions.)

LOW-OIL SHUTDOWN

The unit is equipped with a low oil sensor. If the engine oil level becomes lower than required, the pressure washer will automatically shut off. This protects your pressure washer engine from operating without proper lubrication.

If the pressure washer engine shuts off and the oil level is according to specification, check to see if the pressure washer is setting at an angle that forces oil to shift. Place on an even surface to correct this. If the engine fails to start, the oil level may not be sufficient to deactivate low oil level switch. Be sure the sump is completely full of oil.



CAUTION



The pump will overheat and may be damaged, or cause damage if allowed to circulate more than five minutes.

SPARK ARRESTING MUFFLER

YOUR PRODUCT MAY NOT BE EQUIPPED WITH A SPARK ARRESTING MUFFLER. If the product will be used around flammable materials, such as agricultural crops, forests, brush, grass, or other similar items, then an approved spark arrester should be installed and is legally required in the State of California. The California statutes requiring a spark arrester are Sections 13005(b), 4442 and 4443. Spark Arresters are also required on some U.S. Forest Service land and may also be legally required under other statutes and ordinances. An approved spark arrester is available from your Coleman® Powermate® product dealer, or may be ordered from Powermate Corporation, P.O. Box 6001, Kearney, Nebraska 68848. 1-800-445-1805.

SPECIFICATIONS

Maximum Inlet Pressure	Up to 90 PSIG
RPM	3600 RPM
Temperature of Pumped Fluids	Up to 80°F
Inlet Ports	3/8" BSP
Discharge Ports	3/8" BSP
Weight	9 lbs.
Crankcase oil Capacity	4.7 fl. oz.
Pump oil	SAE 30W Nondetergent

Consult the factory for special requirements that must be met if the pump is to operate beyond one or more of the limits specified above.

SPRAY NOZZLE SELECTION

Following is information concerning the four nozzles provided with your pressure washer.

NOTE: The force of the spray on the surface you are cleaning increases as you move closer to the surface.

0° High Pressure (Red): The water stream discharged is very aggressive. Use with extreme caution to prevent damage to the surface being cleaned or injury to persons or animals.

15° High Pressure (Yellow): This is the nozzle used for most cleaning applications. It provides wide coverage and a powerful water stream.

40° High Pressure (White): This nozzle is used for cleaning with a wider coverage over a larger area with a powerful water stream.

65° Low Pressure (Black): Provides low pressure spray and a wide coverage. Used primarily when operating the chemical injector to apply chemicals.

BEFORE OPERATION

NOTE: The engine and pump on your Coleman® Powermate® Pressure Washer will often have improved performance after a break-in period of several hours.

PRE-START PREPARATION

Before starting the pressure washer, check for loose or missing parts and for any damage which may have occurred during shipment.

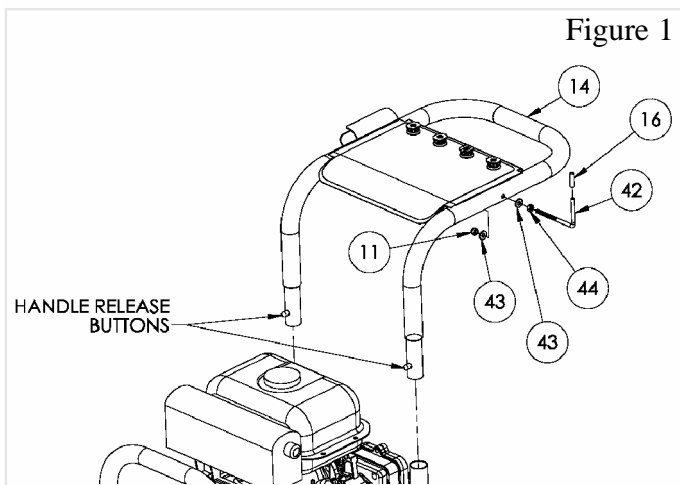
HOSE AND GUN ASSEMBLY

NOTE: Align threaded connections carefully to prevent damaging threads during assembly. Tighten connections securely to prevent leaks during operation.

Attach the hose to the inlet of the trigger gun.

Handle Installation

Install handle and hose hook as shown in Figure 1.



LUBRICATION

DO NOT attempt to start the pressure washer engine without filling the engine crank case with the proper amount and type of oil (See pages 11 and 12 and Figure 2). Your pressure washer engine has been shipped from the factory without oil in the engine crankcase. Operating the unit without oil will ruin the engine.

The pump has been shipped with oil. Before operating the pressure washer check the oil level of the pump to make sure the oil level is to pump manufacturer's required level. (See Figure 2). Use oil that is recommended from the pump manufacturer. **DO NOT OVERFILL!**

If the pump is not equipped with a dipstick or side glass window check oil leaks from the pump. Pump oil is shipped in the pump from factory. Follow pump manufacturer's maintenance schedule for proper care.

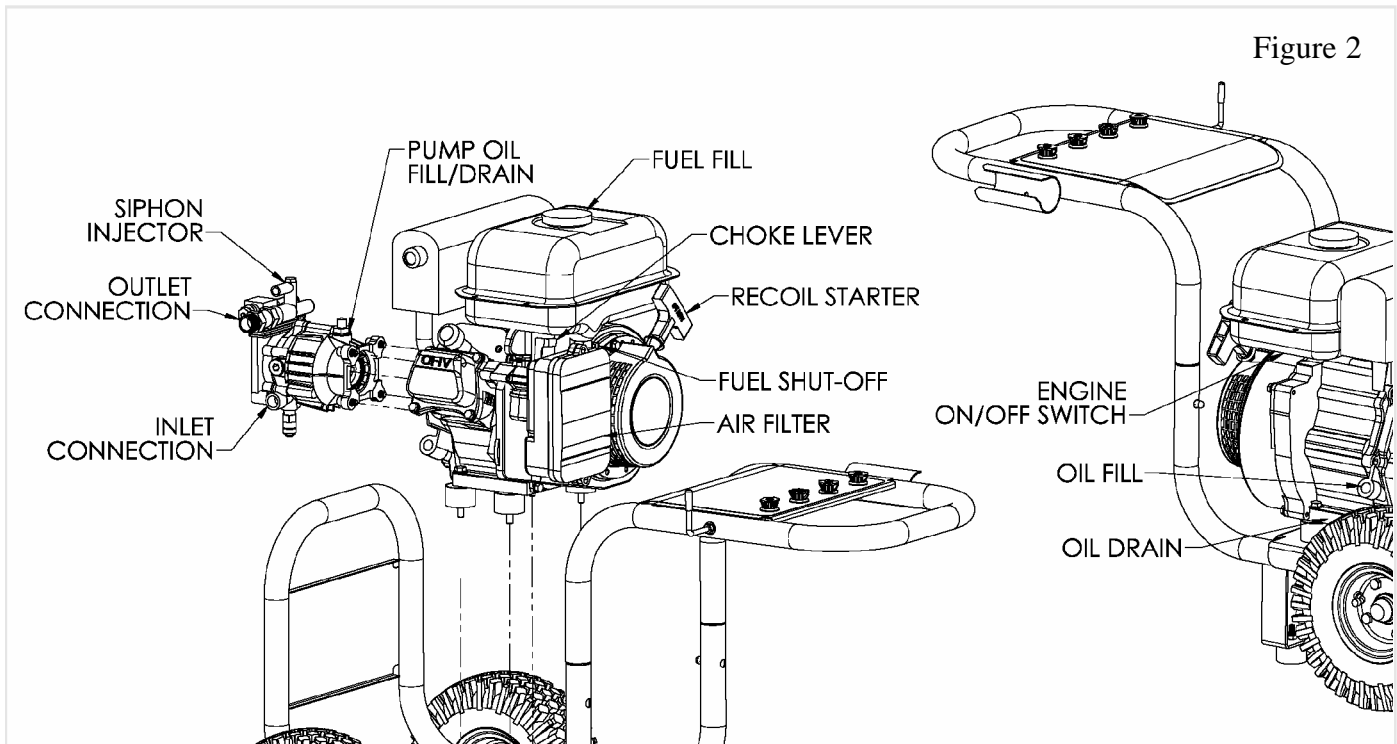
FUEL

Fill the tank with clean, fresh unleaded automotive gasoline. (See Figure 2). Regular grade gasoline may be used provided a high octane rating is obtained (at least 85 pump octane).

WARNING

Gasoline is very dangerous. Serious injury may result from fire caused by gasoline contacting hot surfaces.

Do not overfill the tank. Keep maximum fuel level 1/2 inch below the bottom of the filler neck. This will allow expansion in hot weather and prevent overflow.



OPERATING CONNECTIONS

HIGH PRESSURE HOSE

Attach the high pressure hose to the fitting located on the pump. (See Figure 2, page 6).

NOTE: DO NOT use a high pressure hose from another manufacturer.

WATER CONNECTION

Before connecting to unit, run water through the garden hose (not supplied) to flush out any foreign matter. Check that the screen is clean and is in the inlet of the pump. Attach garden hose to the pressure washer water inlet. (See Figure 2, page 6).

NOTE: The water supply must provide a minimum of 4 g.p.m. at 20 p.s.i. or the pump will be damaged.

OPERATING INSTRUCTIONS

START-UP PROCEDURE

1. Make sure water supply is connected and turned on.
2. Release gun safety if locked.
3. To allow air to escape from the hose, squeeze trigger on the gun until there is a steady stream of water coming from the nozzle.
4. Remove any dirt or foreign matter from the gun outlet and the male connector of the wand.
5. Insert the nozzle wand into the gun wand and tighten the twistfast fitting securely by hand.

WARNING



If the wand is not securely locked into place, it could be ejected under high pressure when operating the gun, possibly causing injury or damage.

STARTING THE ENGINE (See Figure 2, page 6)

1. Check oil and fuel level.
2. Adjust choke prime as necessary.
3. Set the engine switch to the "ON" position.
4. Squeeze trigger on pressure washer to release pressure while pulling on the engine starter rope with a fast steady pull. Pressure may otherwise build up making starting the unit difficult.
5. As the engine warms up, readjust the choke.

CHEMICAL INJECTION



CAUTION

This pressure washer is intended for use only with liquid car wash detergents, developed specifically for pressure washer and with mild soaps. We recommend the use of Coleman® Powermate® Pressure Washer Chemicals. Only use chemicals compatible with the aluminum and brass parts of the pressure washer. Powdered soaps may clog the injection system. Always use chemicals according to manufacturer directions. Powermate Corporation assumes no responsibility for any damages caused by chemicals injected through this pressure washer.

1. Attach injection tube assembly to the siphon injector on the pump. (See Figure 2, page 6).
2. Open a container of Coleman® Powermate® Pressure Washer Chemical and place next to the unit near the injection tube.
3. Visually inspect strainer at the end of the injection tube to verify that it is not clogged.
4. Insert the injection tube into the container all the way to the bottom.
5. If chemical injection is adjustable, set injection rate by turning valve clockwise until it is tight. Then turn valve counterclockwise to increase injector rate and clockwise to decrease injector rate.
6. If your pressure washer is equipped with removable nozzles, remove the high-pressure nozzle from the wand and install the black injection nozzle. The solution will automatically be mixed with the water and discharged through the nozzle.
7. If your pressure washer is equipped with an adjustable nozzle, the low pressure nozzle position should be used when operating the chemical injector to apply chemicals. When low pressure is required, grasp and slide the nozzle cover away from the gun.

NOTE: For certain models, if the engine throttle is not in the "fast" position, the injection of the solution may be decreased or stopped.

CLEANING TECHNIQUES

Cleaning Techniques

When cleaning with the pressure washer, many cleaning tasks can be solved with water alone, but for most tasks it is advantageous to use a detergent also. A detergent ensures a quick soaking of the dirt allowing the high pressure water to penetrate and remove the dirt more effectively.

Coleman® Powermate® Pressure Washer Chemicals are specially formulated to be used with your pressure washer.

APPLICATION OF SOAP OR DEGREASER

1. Apply the solution to a DRY work surface. On a vertical surface, apply horizontally from side to side starting from the bottom to avoid streaking.

NOTE: Wetting the surface first is not recommended, as it dilutes the detergent and reduces its cleaning ability. Avoid working on hot surfaces or in direct sunlight to minimize the chances of the chemical damaging painted surfaces. Damage may occur to painted surface if chemical is allowed to dry on the surface. Hold nozzle far enough away from surface to prevent damage to the surface.

2. Allow chemical to remain on the surface for a short time before rinsing.

3. Rinse with clean water under high pressure. On a vertical surface, first rinse from the bottom up, then rinse from the top down. Hold nozzle 6 to 8 inches from the work surface at a 45° angle using the flat spray as a peeling tool rather than a scrub brush.

APPLICATION OF WAX

1. Immediately after cleaning, apply Coleman® Powermate® Pressure Washer Wax. Place injection tube in container of wax.
2. Apply the wax sparingly in an even layer. Apply to wet surfaces from the bottom up for even distribution and to avoid streaking.
3. Remove the suction tube from the wax bottle and rinse off the surplus wax.

NOTE: IF SURPLUS WAX IS NOT REMOVED, A HAZY FINISH MAY RESULT.

4. Wipe dry to reduce water spotting.

END OF OPERATION

End of Operation

When you have completed use of the chemical injection system, remove tube from container. Continue to run in low pressure position and inject clean water through the tube and injection system by placing end of tube in a container of clean water. Continue to run until it is thoroughly cleaned.

MAINTENANCE

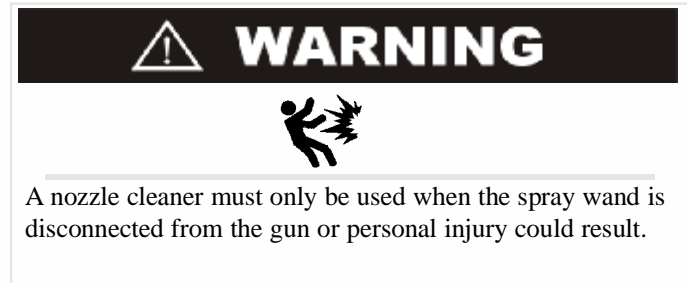
CONNECTIONS

Connections on pressure washer hoses, gun and spray wand should be cleaned regularly and lubricated with the manufacturer's recommended grease to prevent leakage and damage to the o-rings.

NOZZLE

If the high pressure/low pressure adjustment of the nozzle becomes difficult, please contact Coleman® Powermate® Customer Service Department for proper cleaning and lubrication procedures.

Clogging of the nozzle causes the pump pressure to be too high and cleaning is immediately required.



1. Separate the wand from the gun.
2. Clear the nozzle with a small rigid piece of wire such as a paper clip.
3. Flush the nozzle backwards with water.
4. Reconnect the wand to the gun.

Restart the pressure washer and depress the trigger on the spray gun. If the nozzle is still plugged or partially plugged, repeat above items 1-4.

If the previous procedure does not clear the nozzle, replace with a new nozzle.

WATER SCREEN

The pressure washer is equipped with a water inlet screen to protect the pump. If the screen is not kept clean, it will restrict the flow of water to the pressure washer and may cause damage to the pump. Do not damage the screen while removing or cleaning screen. Any foreign particles entering the pump may damage the pump. Do not operate pressure washer without the screen in place.

Remove the screen and back flush to remove impurities from screen. Replace immediately.

ENGINE MAINTENANCE

During the winter months, rare atmospheric conditions may develop which will cause an icing condition in the carburetor. If this develops, the engine may run rough, lose power, and may stall. This temporary condition can be overcome by deflecting some of the hot air from the engine over the carburetor area.

NOTE: Refer to pages 11 and 12 for service and maintenance of the engine.

STORAGE

PUMP STORAGE

If you must store your pressure washer in a location where the temperature is below 32°F, you can minimize the chance of damage to your machine by utilizing the following procedure:

1. Shut off water supply and relieve pressure in the spray gun by depressing the trigger. Disconnect the garden hose from the pressure washer, but leave the high-pressure hose connected.
2. Tip the unit on its side with the inlet connection pointing up.
3. Insert a small funnel (to prevent spilling) into the inlet and pour in approximately 1/4 cup of RV antifreeze.
4. Disconnect spark plug wire.
5. Without connecting garden hose pull the recoil several times to circulate the antifreeze in the pump system. Continue to add antifreeze and pull the recoil until the antifreeze is expelled when the trigger is pulled.
6. Turn the unit upright.



CAUTION

Prior to restarting, thaw out any possible ice from the pressure washer hoses, spray gun and wand.

Another method of reducing risks of freeze damage is to drain your pressure washer as follow:

1. Stop the pressure washer and detach supply hose and high pressure hose. Squeeze the trigger of the discharge gun to drain all water from the wand and hose.
2. Restart the pressure washer and let it run briefly (about 5 seconds) until water no longer discharges from the high pressure outlet.

ENGINE STORAGE

When the pressure washer is not being operated or is being stored more than one month, follow these instructions:

1. Replenish engine oil to upper level.
2. Drain gasoline from fuel tank, fuel line, fuel valve and carburetor.
3. Pour about one teaspoon of engine oil through the spark plug hole, pull the recoil starter several times and replace the plug. Then pull the starter slowly until you feel increased pressure which indicates the piston is on its compression stroke and leave it in that position. This closes both the intake and exhaust valves to prevent the inside of the cylinder from rusting.
4. Cover the pressure washer and store in a clean, dry place that is well ventilated away from open flame or sparks.

NOTE: The use of a fuel additive, such as Coleman® Powermate® Generator Fuel Additive, or an equivalent, will minimize the formulation of fuel gum deposits during storage. Such an additive may be added to the gasoline in the fuel tank of the engine, or to the gasoline in a storage container.

LIMITED WARRANTY

Warranty Coverage: Powermate Corporation (the Company) warrants to the original retail customer in North America that it will repair or replace, free of charge, any parts found by the Company or its authorized service representative to be defective in material or workmanship. This warranty covers the cost of replacement parts and labor for defects in material or workmanship.

Not Covered:

- Transportation charges for sending the product to the Company or its authorized service representative for warranty service, or for shipping repaired or replacement products back to the customer; these charges must be borne by the customer.
- Engine may be covered exclusively by a separate warranty from the engine manufacturer as set forth in the engine Manual (if included).
- Damages caused by abuse or accident, and the effects of corrosion, erosion and normal wear and tear.
- Warranty is void if the customer fails to maintain and operate the product as instructed and recommended by the Company in the owner's manual.
- Warranty applies only if the product is used solely for consumer applications, and does not apply if the product is used for commercial or business applications, or as rental equipment.
- The Company will not pay for repairs or adjustments to the product, or for any costs or labor, performed without the Company's prior authorization.

Warranty Period: One (1) year from the date of purchase. For warranty service, the customer must provide dated proof of purchase and must notify the Company within the warranty period.

For warranty service: Call toll free 800-445-1805, or write to Powermate Corporation, Product Services, 4970 Airport Road, P. O. Box 6001, Kearney, NE 68848.

EXCLUSIONS AND LIMITATIONS: THE COMPANY MAKES NO OTHER WARRANTY OF ANY KIND, EXPRESS OR IMPLIED. IMPLIED WARRANTIES, INCLUDING WARRANTIES OF MERCHANTABILITY AND OF FITNESS FOR A PARTICULAR PURPOSE, ARE HEREBY DISCLAIMED. THE WARRANTY SERVICE DESCRIBED ABOVE IS THE EXCLUSIVE REMEDY UNDER THIS WARRANTY; LIABILITY FOR INCIDENTAL AND CONSEQUENTIAL DAMAGES IS EXCLUDED TO THE EXTENT PERMITTED BY LAW.

This warranty gives you specific legal rights, and you may also have other rights which vary from state to state. Some states do not allow a disclaimer of implied warranties, or the exclusion or limitation of incidental and consequential damages, so the above disclaimers and exclusions may not apply to you.

PROBLEM	POSSIBLE CAUSE	CORRECTION
Engine will not start or stops while operating.	Low-oil shutdown.	Fill engine with oil.
	Engine switch not in the "ON" position.	Turn switch "ON".
	Pressure build up in hose.	Squeeze trigger.
Engine is overloaded.	Nozzle partially blocked.	Clean nozzle.
	Excessive pressure.	Reduce pressure by using pressure adjustment knob
Water or oil leaking from bottom of pump.	A small amount of leakage is normal.	If excessive leaking occurs call the Customer Service Department.
Pressure increases when gun is closed.	Bypass valve not operating properly.	Call the Customer Service Department.
Engine running but pump not building maximum pressure or has irregular pressure.	Faucet closed	Open faucet.
	Unit has been stored in freezing temperatures.	Thaw out unit completely including hose, gun and wand.
	Inadequate water supply.	Provide a minimum of 4 gpm at 20 psi.
	Water inlet screen clogged.	Clean screen.
	Kink in garden hose.	Straighten hose
	Wand nozzle worn or damaged.	Replace nozzle,
	Air in pump.	Let run with gun open and wand removed until steady stream of water is released.
	Adjustable pressure knob not set to maximum position.	Set to maximum position.
	Suction or discharge valves clogged or worn out.	Call the Customer Service Department.
	By-pass valve not operating effectively.	Call the Customer Service Department.
No intake of chemicals	Injection tube not securely inserted into unit.	Push firmly into injector.
	Tube cracked or split.	Replace tubing.
	Wrong nozzle.	Switch to low pressure nozzle.
	Injector turned off.	Turn collar counter clockwise.
	Injection tube strainer clogged.	Clean strainer.
	Nozzle blocked.	Clean nozzle.
Trigger will not move.	Dried chemicals injector.	Dissolve by running warm water trough the injection tube.
	Gun safety lock engaged.	Release safety lock.
Water in crankcase.	High humidity.	Change oil more frequently.
	Worn seals.	Call the Customer Service Department.
Noisy operation.	Worn bearings	Call the Customer Service Department.
	Air mixed with water.	Check inlet lines for restrictions and /or proper sizing.
Rough/pulsating operation with pressure drop.	Worn packing.	Call the Customer Service Department.
	Inlet restriction.	Check system for stoppage, air leaks, correctly sized inlet plumbing to pump.
	Unloader.	Check unloader for proper operation.
	Air mixed in water.	Check inlet lines for restrictions and/or proper sizing.
High crankcase temperatures.	Wrong grade of oil.	Use recommended oil.
	Improper amount of oil in crankcase.	Adjust oil level to proper amount.

PERIODIC MAINTENANCE

ITEM	NOTES	Daily (Before operation)	Initial 20 hours	Every 50 hours	Every 100 hours
Spark Plug	Check condition. Adjust gap and clean. Replace if necessary.			ü	
Engine Oil	Check oil level.	ü			
	Replace.		ü		ü
Air Filter	Clean, replace if necessary.			ü	
Fuel Filter	Clean fuel filter and fuel tank strainer. Replace if necessary.				ü
Fuel Line	Check fuel hose for cracks or other damage. Replace if necessary.	ü			
Exhaust System	Check for leakage. Retighten or replace gasket if necessary.	ü			
	Check muffler screen. Clean/replace if necessary.				ü
Carburetor	Check choke operation.	ü			
Starting System	Check recoil starter operation.	ü			
Fittings/ Fasteners	Check. Replace if necessary.				ü

ENGINE MAINTENANCE

SPARK PLUG

Remove the spark plug and clean the electrodes section with a wire brush or sandpaper. Next, set the gap at .028/.031 inches (0.7-0.8 mm) by adjusting the negative electrode. Replace the spark plug with correct torque: 14 ft-lb (20 N.m)



CAUTION

Replace with only the same type of spark plug which was removed. An improper spark plug can cause the engine to overheat, emit smoke, or otherwise perform poorly.

OIL TYPE

Use new good quality oil, SE, SF, or SD grade. The oil to be used depends upon the temperature at which the engine is operated:

Below 32° F (0° C)SAE 10W, 10W-30, or 10W-40
 32 to 80° F (0 to 25° C)SAE 20W, 10W-30, or 10W-40
 80 to 95° F (25 to 35° C)SAE 30W, 10W-30, or 10W-40
 Above 95° F (35° C)SAE 40W

OIL REPLACEMENT

1. Change oil while engine is warm.
2. Place the generator unit on a level surface.
3. Remove the oil filler cap.
4. Open the oil drain plug and let oil drain completely into a pan placed under the engine.
5. Check gaskets. Replace if required.
6. Reinstall the oil drain plug and refill engine with clean oil.
7. Replace the oil filler cap.

AIR FILTER CLEANING

1. Unscrew the air filter cover.
2. Remove filter element and wash well in solvent.
3. Pour a small amount of oil onto the filter element and gently squeeze out any excess oil.
4. Replace the filter element and air filter cover.
5. Be sure the filter cover seals properly all around.

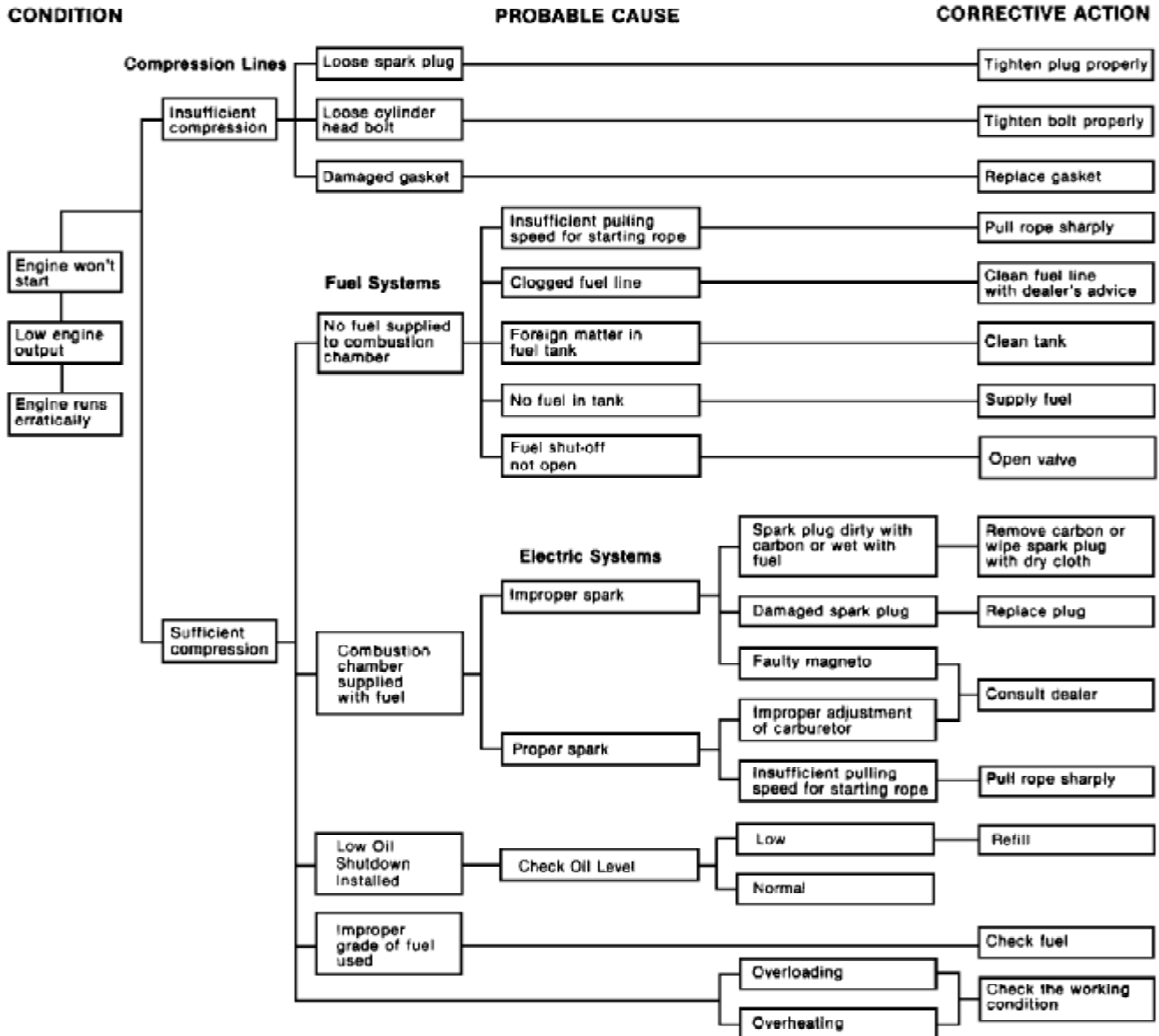
FUEL VALVE FILTER CLEANING

1. Remove the cup at the bottom of the fuel valve with a small wrench.
2. Remove the fuel valve filter.
3. Clean and wash out the filter and cup and replace.

FUEL STRAINER CLEANING

1. Remove the plastic fuel strainer, located below the fuel tank cap.
2. Wash the strainer in solvent and replace.

ENGINE TROUBLESHOOTING



ENGINE SPECIFICATIONS

Type	4-stroke, single cylinder, gasoline, OHV
Displacement	171 cc, 10.44 cubic inches
Maximum HP5.5 HP @ 3600 rpm
Starting System	Recoil (electronic ignition)
Driving System	Direct coupling, tapered crank
Oil Capacity	20 oz.
Spark Plug	Champion RN14YC or equivalent
Governor	Mechanical (adjustable)
Cooling System	Forced air cooling
Bore x Stroke66.0 X 50.0 mm (2.60 x 1.97 in.)
Carburetor Type	Float
Air Cleaner Type	Foam element

**CALIFORNIA EMISSION CONTROL WARRANTY STATEMENT
YOUR WARRANTY RIGHTS AND OBLIGATIONS**

The California Air Resources Board and Powermate Corporation (herein "Powermate") are pleased to explain the evaporative emission control system (EECS) warranty on your 2006 pressure washer. In California, new pressure washers must be designed, built and equipped to meet the State's stringent anti-smog standards. Powermate must warrant the EECS on your pressure washer for the periods of time listed below, provided there has been no abuse, neglect or improper maintenance of your pressure washer.

Your EECS includes parts such as: fuel hoses.

MANUFACTURER'S WARRANTY COVERAGE:

This evaporative emission control system is warranted for two years. The warranty period begins on the date the pressure washer is delivered to an ultimate purchaser.

Powermate warrants to the ultimate purchaser and any subsequent owner that the pressure washer is (i) designed, built and equipped so as to conform with all applicable regulations; and (ii) free from defects in materials and workmanship that cause the failure of a warranted part to be identical in all material respects to that part as described in Powermate's application for certification.

If any evaporative emission-related part on your pressure washer is defective, the part will be repaired or replaced by Powermate.

OWNER'S WARRANTY RESPONSIBILITIES:

As the pressure washer owner, you are responsible for performance of the required maintenance listed in your owner's manual. Powermate recommends that you retain all receipts covering maintenance on your pressure washer, but Powermate cannot deny warranty solely for the lack of receipts. You should, however, be aware that Powermate may deny you warranty coverage if your pressure washer or a part has failed due to abuse, neglect or improper maintenance or unapproved modifications.

You are responsible for presenting your pressure washer to an authorized Powermate warranty service center as soon as the problem exists. The warranty repairs should be completed in a reasonable amount of time, not to exceed 30 days. If you have a question regarding your warranty coverage, you should call Powermate Product Service at 1-800-445-1805.

DETAILS OF YOUR WARRANTY

Subject to certain conditions and exclusions as stated below, the warranty on emission-related parts is as follows:

- (1) Any warranted part that is not scheduled for replacement as required maintenance in the written instructions supplied, is warranted for the period stated above. If the part fails during the period of warranty coverage, the part will be repaired or replaced by Powermate according to Subsection (4) below. Any such part repaired or replaced under warranty will be warranted for the remainder of the period.
- (2) Any warranted part that is scheduled only for regular inspection in the written instructions supplied, is warranted for the warranty period stated above. Any such part repaired or replaced under warranty will be warranted for the remaining warranty period.
- (3) Any warranted part that is scheduled for replacement as required maintenance in the written instructions supplied, is warranted for the period of time before the first scheduled replacement date for that part. If the part fails before the first scheduled replacement date, the part will be repaired or replaced by Powermate according to Subsection (4) below. Any such part repaired or replaced under warranty will be warranted for the remainder of the period prior to the first scheduled replacement date for the part.
- (4) Repair or replacement of any warranted part under the warranty provisions herein must be performed at an authorized Powermate warranty service center at no charge to the owner.
- (5) The pressure washer owner will not be charged for diagnostic labor that is directly associated with diagnosis of a defective, emission-related warranted part, provided that such diagnostic work is performed at an authorized Powermate warranty service center.
- (6) Powermate is liable for damages to other engine or pressure washer components proximately caused by a failure under warranty of any warranted part.
- (7) Throughout the pressure washer warranty period stated above, Powermate will maintain a supply of warranted parts sufficient to meet the expected demand for such parts.
- (8) Any replacement part may be used in the performance of any warranty maintenance or repairs and must be provided without charge to the owner. Such use will not reduce the warranty obligations of Powermate.
- (9) Add-on or modified parts that are not exempted by the Air Resources Board may not be used. The use of any non-exempted add-on or modified parts by the ultimate purchaser will be grounds for disallowing a warranty claims. Powermate will not be liable to warrant failures or warranted parts caused by the use of a non-exempted add-on or modified part.
- (10) The repair or replacement of any warranted part otherwise eligible for warranty coverage may be excluded from such warranty coverage if the pressure washer has been abused, neglected or improperly maintained, and such abuse, neglect or improper maintenance was the direct cause of the need for repair or replacement of the part.

WARRANTED PARTS:

The following emission warranty parts list is covered:

Fuel Hose.

PARTS LIST / LISTE DES PIÈCES / LISTA DE PIEZAS

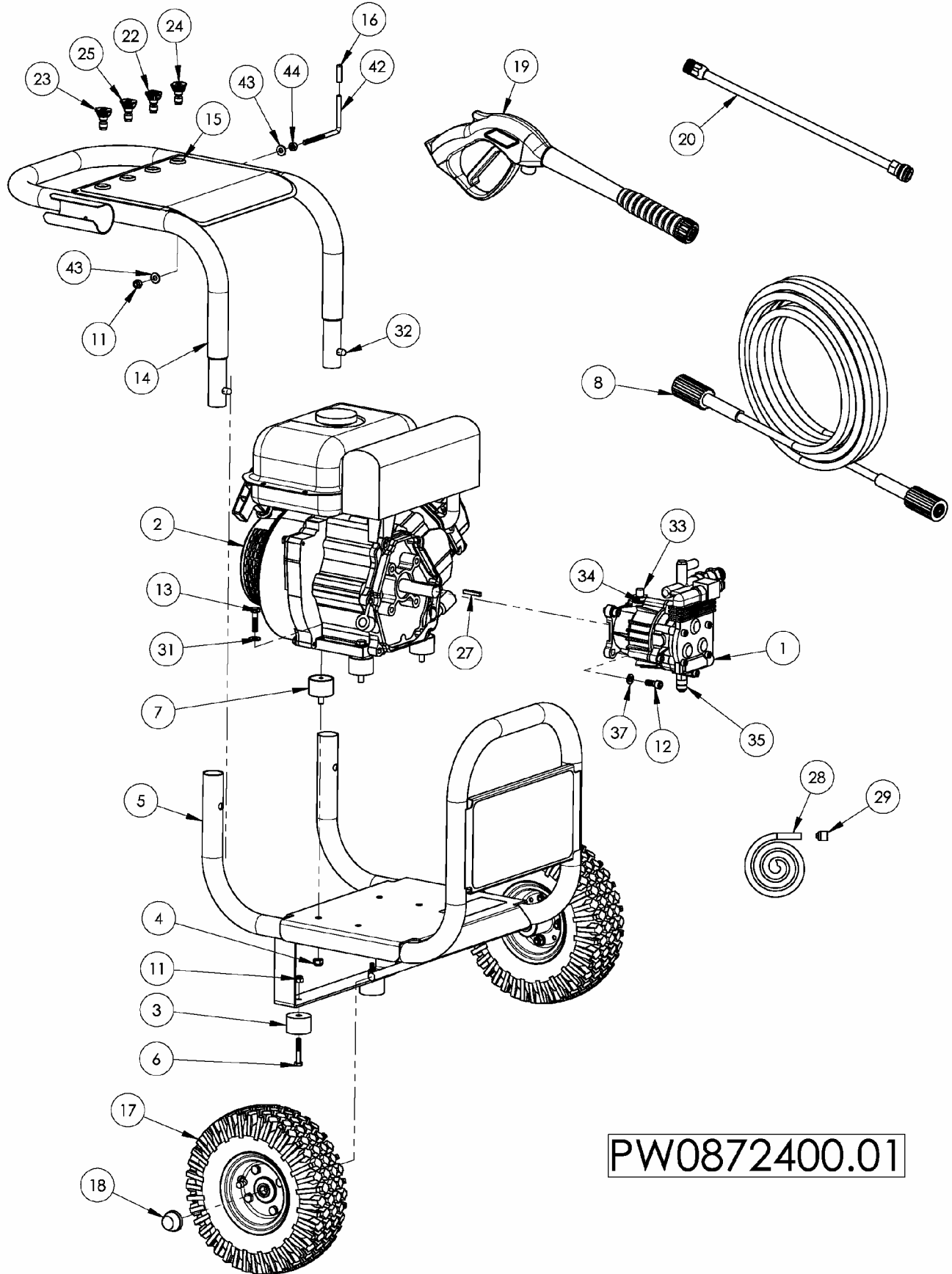
REF. NO.	PART NO.	DESCRIPTION	DESCRIPTION	DESCRIPCION	QTY
1	0063456	Pump Faip	Pompe	Bomba	1
2	0063614	Engine 5.5HP Sumec	Moteur	Motor	1
3	0055894	Rubber Foot	Pied	Pie	2
4	Note A	Nyloc Nut 5/16-18	Écrou autofreiné	Tuerca de nyloc	4
5	0063610	Carrier	Ensemble de transport	Transportador, conjunto	1
6	Note A	Bolt 1/4-20 x 1.50	Boulon	Perno	2
7	0051094	Isolator	Sectionneur	Aislador	4
8	0058081	Hose	Tuyau	Manguera	1
11	Note A	Nyloc Nut 1/4-20	Écrou autofreiné	Tuerca de nyloc	3
12	0055204	Bolt SHC 5/16-24 x .75	Boulon	Perno	4
13	Note A	Bolt 5/16-18 X 1.25	Boulon	Perno	4
14	0063611	Handle	Poignée	Mango	1
15	0057705	Grommet	Anneau	Arandela aislante	4
16	0053835	Vinyl round cap	Capuchon de rond de vinyle	Redondo Vinilo Gorro	1
17	0057704	Wheel	Roue	Rueda	2
18	0053188	Hub cap	Chapeau d'essieu	Tapa de eje	2
19	0061351	Gun Assembly	Pistolet	Pistola	1
20	0057707	Assy, wand & quick connect	Baguette et branchement rapide	Ensamblado de varilla de pulverización	1
22	0057711	Nozzle Black	Buse Noir	Boquilla Negra	1
23	0057851	Nozzle White	Buse Pâle	Boquilla Blanco	1
24	0057850	Nozzle Yellow	Buse Jaune	Boquilla Amarilla	1
25	0057849	Nozzle Red	Buse Rouge	Boquilla Roja	1
27	0055318	Key SQ 3/16 x 1.25	Touche	Tecla	1
28	0057701	Chemical Hose	Tuyau pour les produits chimiques	Manguera de sustancia química	1
29	0000087	Chemical filter	Filtre pour les produits chimiques	Sustancia química filtro	1
31	Note A	Washer flat 5/16	Rondelle plate	Arandela plana	4
32	0063132	Handle release button	Bouton de déclenchement	Botone de liberación la manija	1
33	0063523	Oil breather	Reniflard, huile	Respiradero de aceite	1
34	0000069	Gasket	Joint d'étanchéié plat	Empaque	1
35	0061439	Thermal relief valve	Thermal vestige tuyau	Térmico reliquia válvula	1
37	Note A	Washer lock 5/16	Contre-écrou 5/16	Arandela, de cierre 5/16	4
42	0063326	Bolt L 1/4-20 x 3.75	Boulon	Perno	1
43	Note A	Washer flat 1/4	Rondelle plate	Arandela plana	2
44	Note A	Nut hex 1/4-20	Écrou	Tuerca	1

Note A: These are standard parts available at your local hardware store.

Remarque A: Ces pièces sont des pièces standard disponibles dans les quincailleries.

Nota A: Estas son piezas estándar disponibles en su ferretería local.

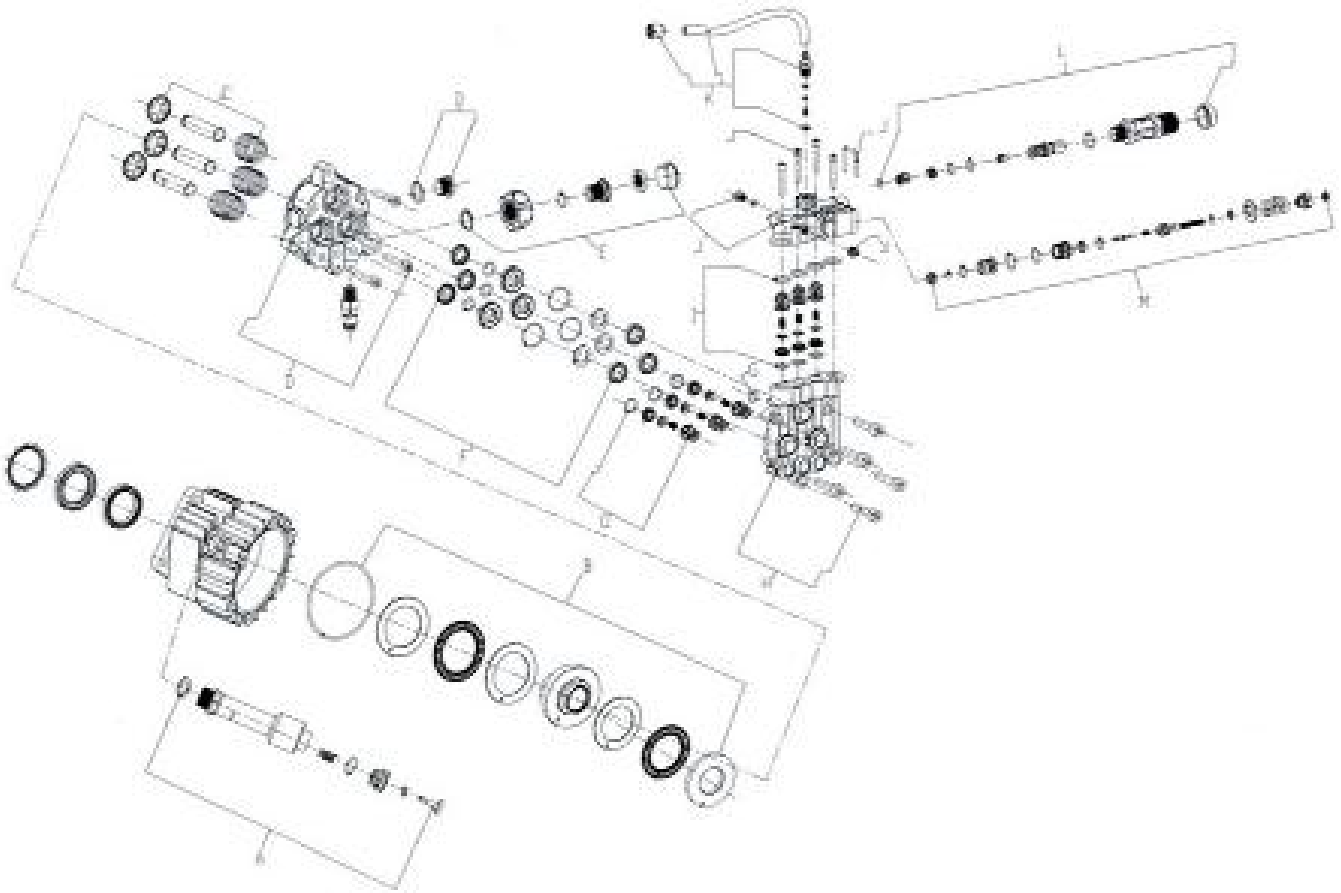
PARTS DRAWING / SCHEMA DES PIÈCES / DIAGRAMA DE PIEZAS



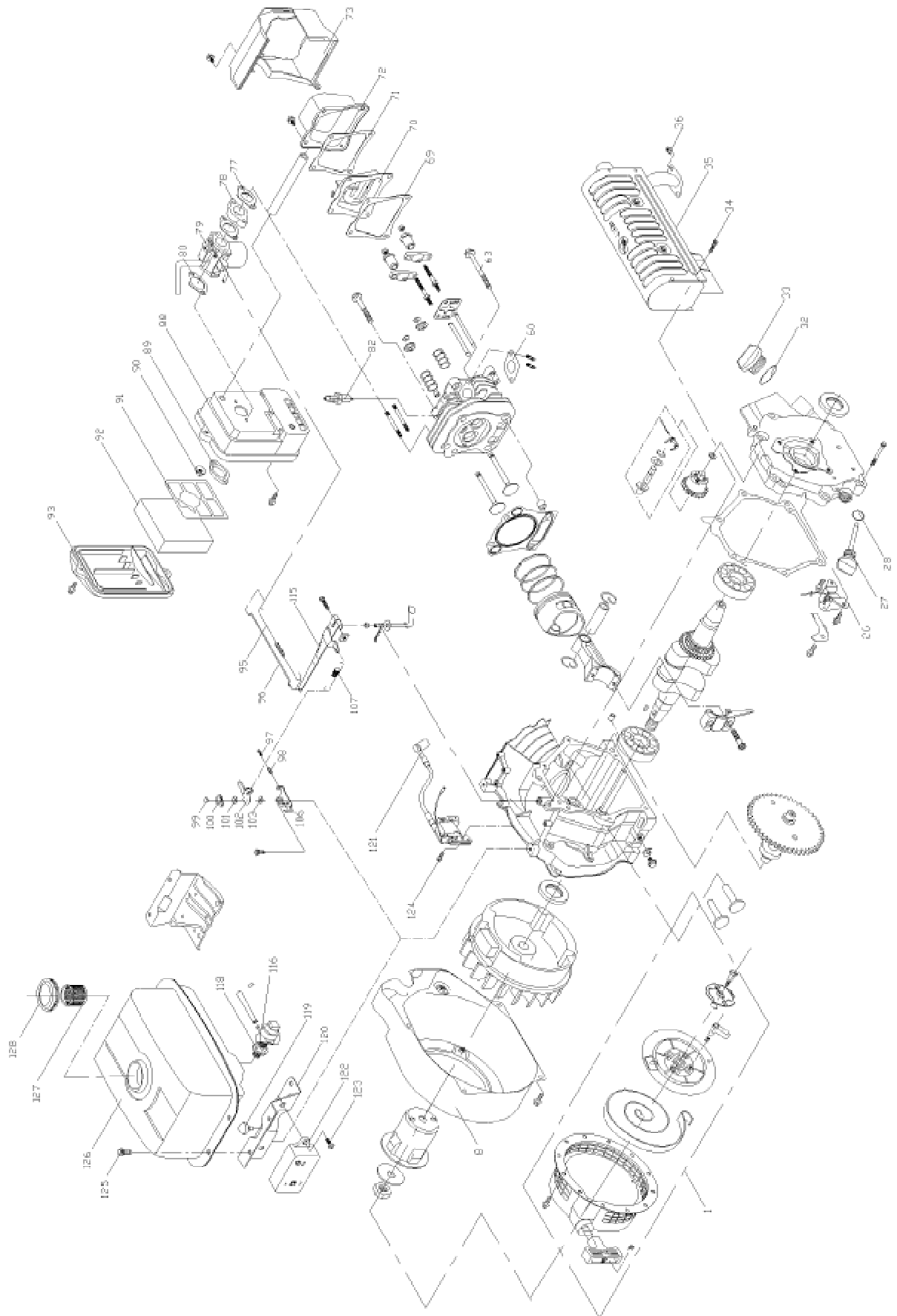
PW0872400.01

PUMP KITS / POMPE JEUS / BOMBEE JUEGOS

REF	PART NO.	KIT	JEU	JUEGO
B, C, D	0063456	Replace with complete pump	Remplacer avec la pompe complète	Reemplace con bomba completa
E	0064010	Inlet Kit	Jeu de Arrivée	Juego de Cala
F	0064011	Seal/Bushing Kit	Jeu de Joint/Bague	Juego de Sellos/Buje
G	0064012	Inlet Valve Kit	Jeu de Soupape d'arrivée	Juego de Válvula de cala
H	0064013	Pump Head Kit	Jeu de Tête de pompe	Juego de Cabeza de bomba
I	0064014	Outlet Valve Kit	Jeu de Soupape de sortie	Juego de Válvula de salida
J	0064015	Manifold Kit	Jeu de Collecteur	Juego de Múltiple
K	0064016	Detergent Suction Kit	Jeu de détergente de Succion	Juego de Succión de detergente
L	0064017	High Pressure Outlet Kit	Jeu de L'haute Sortie de Pression	Juego de Alto de Salida de Presión
M	0064018	By-Pass Unloader Kit	Jeu de Sauter Régulateur de pression	Juego de Evite Descargador



ENGINE / MOTEUR / MOTOR
PARTS DRAWING / SCHEMA DES PIÈCES / DIAGRAMA DE PIEZAS



PARTS LIST / LISTE DES PIÈCES / LISTA DE PIEZAS

REF. NO.	PART NO.	DESCRIPTION	DESCRIPTION	DESCRIPCION	QTY
	0063614	Engine 5.5HP Sumec	Moteur	Motor	1
1	0063066	Engine recoil assembly	Moteur recule l'assemblée	Asamblea de retráctil de motor	1
8	0063098	Housing, blower	Corps	Compartimiento	1
26	0063075	Low oil sensor	Détecteur de bas niveau d'huile	Sensor de bajo nivel de aceite	1
27	0063736	Oil cap	capuchon à huile	Tapa de aceite	1
28	0063737	Oil filler seal	Joint	Sello	1
32	0063738	Oil filler seal	Joint	Sello	1
33	0063739	Oil cap	capuchon à huile	Tapa de aceite	1
34	0063740	Screw M6 x 12	Vis M6 x 12	Tornillo M6 x 12	1
35	0063741	Muffler	Silencieux	Silenciador	1
36	0063742	Nut	Écrous	Tuerca	2
60	0063093	Gasket, exhaust	Joint	Empaquetadura	1
63	0063743	Screw M8 x 65	Vis M8 x 65	Tornillo M8 x 65	2
69	0063087	Gasket, head cover	Joint	Empaquetadura	1
70	0063744	Breather assembly	Reniflard	Respiradero	1
71	0063745	Breather cover gasket	Joint	Empaquetadura	1
72	0063746	Cylinder head cover	Couvercle	Tapa	1
73	0063747	Air Shroud	Enveloppe	Guardera	1
77	0063748	Gasket	Joint	Empaquetadura	1
78	0063749	Plate	Plaque	Placa	1
79	0063057	Carburetor	Carburateur	Carburador	1
80	0063750	Gasket	Joint	Empaquetadura	1
82	Note B	Spark plug	Bougie	Bujía	1
88	0063751	Air filter case	Cas	Caso	1
89	0063752	Plate	Plaque	Placa	1
90	0063753	Nut M6	Écrous M6	Tuerca M6	2
91	0063754	Element fitting plate	Plaque	Placa	1
92	0063068	Air filter	Filtre à air	Filtro de aire	1
93	0063069	Air filter cover	Couvercle du filtre à air	Tapa de filtro de aire	1
95	0063100	Spring, carburetor	Ressort	Resorte	1
96	0063099	Link rod	Tige	Varilla	1
97	0063755	Throttle stop screw M5 x 25	Vis M5 x 25	Tornillo M5 x 25	1
98	0063756	Spring	Ressort	Resorte	1
99	0063757	Nut M6	Écrous M6	Tuerca M6	1
100	0063758	Washer	Rondelle	Arandela	1
101	0063759	Spring Washer	Rondelle	Arandela	1
102	0063760	Throttle lever	Étrangler	Acelerador	1
103	0063761	Washer	Rondelle	Arandela	1
106	0063762	Throttle lever support	Support	Soporte	1
107	0063763	Governing spring	Ressort	Resorte	1
115	0063102	Governor arm	Bras	Brazo	1
116	0063071	Fuel filter	Filtre à carburant	Filtro combustible	1
118	0063070	Fuel shut-off	Alimenter d'arrêt	Abastecza de combustible válvula	1
119	0063764	Antivibrator	Sectionneur	Aislador	1
120	0063765	Fuel tank support	Support	Soporte	1
121	0063091	Ignition module	Module d'allumage	Módulo de ignición	1
122	0063766	Switch and alarm assembly	Interrupteur et alarme	Interruptor y alarma	1
123	0063767	Screw M6 x 10	Vis M6 x 10	Tornillo M6 x 10	1
125	0063768	Screw M6 x 12	Vis M6 x 12	Tornillo M6 x 12	2
126	Note C	Fuel tank	Réservoir de carburant	Tanque de metal de combustible	1
127	0063769	Fuel strainer	Passoire à carburant	Abastecza de combustible el colador	1
128	0063770	Fuel cap	Capuchon	Tapa de combustible	1

Note B: Use Champion RN14YC spark plug or equivalent. Spark plug gap = .028/.031 inches (0.7/0.8 mm)

Note C: Contact your nearest Coleman® Powermate® Service Center for replacement fuel tanks.

Remarque B: L'usage Champion RN14YC bougie ou l'équivalent. L'écart pour la bougie = .028/.031 pouces (0.7/0.8 mm)

Remarque C: Pour commander un réservoir de rechange, contacter Centre de service Coleman® Powermate® le plus proche.

Nota B: El uso Champion bujía RN14YC o equivalente. El espacio para la bujía = pulgadas .028/.031 (0.7/0.8 Mm)

Nota C: Para hacer pedidos de tanques, localice el Centro de Servicio de Coleman® Powermate® más cercano.




**4970 Airport Road
P. O. Box 6001
Kearney, NE 68848
1-800-445-1805
1-308-237-2181
Fax 1-308-234-4187**

© 2005 Powermate Corporation. All rights reserved.

Coleman® and  are registered trademarks of The Coleman Company, Inc. used under license.


Powermate® is a registered trademark of Powermate Corporation.

© 2005 Powermate Corporation. Tous droits réservés.

Coleman® et  sont des marques déposées de The Coleman Company, Inc. utilisées sous licence.

Powermate® est une marque déposée de Powermate Corporation.

© 2005 Powermate Corporation. Reservados todos los derechos.

Coleman® y  son marcas comerciales registradas de The Coleman Company, Inc. utilizadas bajo licencia.

Powermate® es una marca comercial registrada de Powermate Corporation.